

State of Wyoming Corner Record

(In compliance with the *CORNER PERPETUATION AND FILING ACT*, Wyoming Statutes, 1997, Section 33-29-140, et. seq., and the Rules and Regulations of the Board of Registration for Professional Engineers and Professional Land Surveyors)

Reverse side of this form may be used if more space is needed.

Record of original survey and citation of source of historical information (if corner is lost or obliterated). Description of corner monumentation evidence found and/or monument and accessories established to perpetuate the location of this corner. Sketch of relative location of monument, accessories, and reference points with course and distance to adjacent corner(s) (if determined in this survey). Method and rationale for reestablishment of lost or obliterated corner.

G.L.O. Record: U.S. Deputy Surveyor, Edward D. Bright, Sept., 1868; 81.31 Chains Intersect N boundary of Tp 7 links west of Standard Corner to secs 34 & 35. Tp 13 N Range 67 W Where I set a conglomerate 14 x 11 x 9 for closing cor. To secs 2 & 3 Tp 12 N R 67 W.

Found: Loose conglomerate stone with no visible markings lying next to the found loosely set SE Corner of Section 34.

Set: At the proportionate distance on the 3rd Standard Parallel, I set a 2 1/2" x 30" aluminum pipe with a 3 1/4" aluminum cap marked as noted below, 27" in the ground with a 1" x 1" x 2" orange fluorescent magnetic module in the bottom of the monument hole. Set a 5' steel fence post witness north.

LARAMIE COUNTY CLERK
CHEYENNE, WY.

1999 JUN 21 AM 9:06

254547

Aluminum Cap Markings

S34

 S3 S2
 T12N R67W

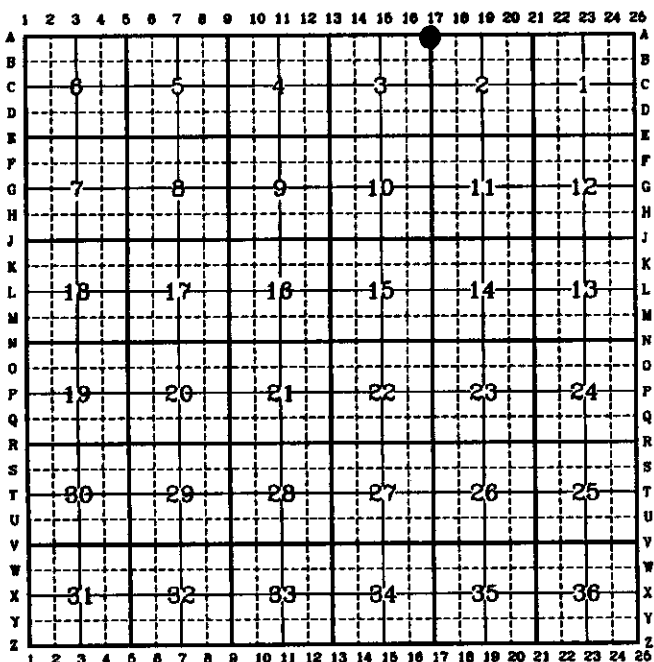
 CC
 1999
 P.L.S. 2927

See back of this sheet for section subdivision detail.

Date of Field Work: April 27, 1999

Office Reference: A.V.I. Job No. 2121

CROSS INDEX DIAGRAM



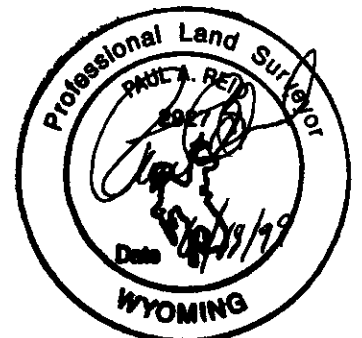
Firm/Agency, Address

Paul A. Reid, P.L.S.
 A.V.I., p.c.
 2035 Westland Road
 Cheyenne, WY 82001

Telephone Number:
 (307) 637-6017

This corner record was prepared by me or under my direction and supervision.

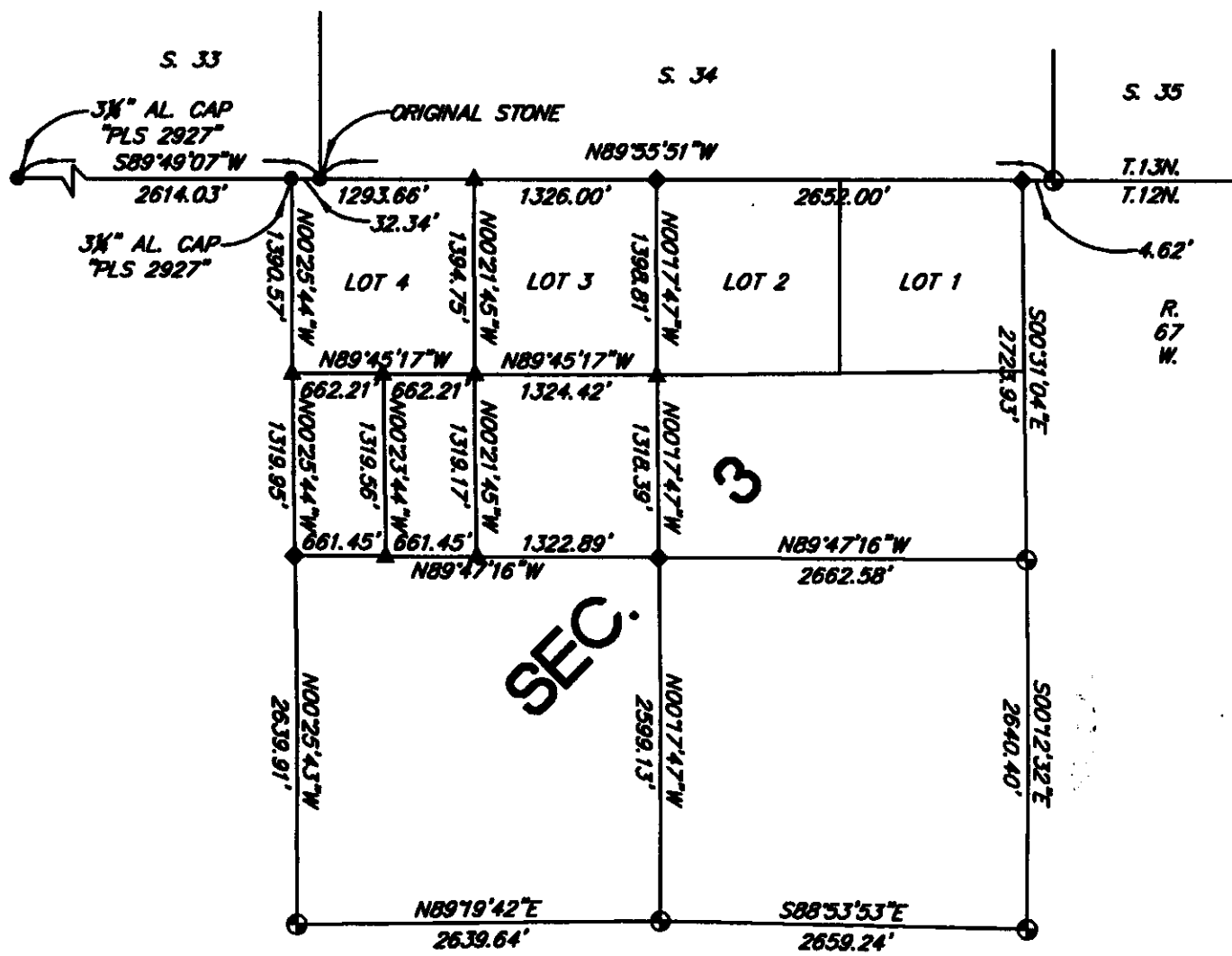
SEAL & SIGNATURE



Corner Name: NE Cor
 SBRPEPLS/PLSW: March 1994

Section: 3

T.12N., R.67W.; 6th P.M. Cross-Index No.: A-17



SECTION SUBDIVISION DETAIL
(NOT TO SCALE)

LEGEND

- FOUND MONUMENT AS NOTED
 - ◆ SET 3 1/4" ALUMINUM CAP MARKED "PLS 2927"
 - ▲ SET 2 1/2" ALUMINUM CAP MARKED "PLS 2927"
 - ⊕ FOUND ORIGINAL STONE, RESET 3 1/4" AL. CAP MARKED "PLS 2927"
- BASIS OF BEARINGS: NAD 83 ($\Delta \alpha = 11'06''$ APPROX.)

